



# Navicat

for **MariaDB**

Navicat for MariaDB provides a native environment for MariaDB database management and development. Connect to local/remote MariaDB servers, and compatible with Amazon RDS. Navicat for MariaDB supports most of the additional features like new storage engines, microseconds, virtual columns, and more.

## FEATURE OVERVIEW



### Comprehensive Data Viewing & Analysis

View, update, and delete records seamlessly in Grid View, Tree View and JSON View through our built-in editors. Integrate a data profiling tool for comprehensive and visual analysis of your data. You can also interact with the visual charts to further explore the data.



### Intuitive Object Designer

Manage database objects through a clear and responsive interface that breaks down query writing into structured tabs. Allow you to write complex queries with greater confidence and accuracy at every step.



### Easy Query Edit / Debugger

Accelerate your coding process with Code Completion and Code Snippet, and gain valuable insights into query-database interaction by visualizing the execution plan. You can also visually construct queries using a set of interactive tools, without having to worry about syntax and proper usage of commands.



### Seamless Data Migration

Data Transfer, Data Synchronization and Structure Synchronization help you migrate your data easier and faster for less overhead. Deliver detailed, step-by-step guidelines for transferring data across databases. Compare and synchronize data and structure between databases. Set up and deploy the comparisons in seconds, and get the detailed script to precisely outlines the changes you want to execute.



### **Intelligent Database Modeling**

Convert your databases into graphical representations and build multiple models in one workspace to illustrate different model objects within a single diagram. Seamlessly align your model design with the actual database to maintain the integrity of the model. Simplify the navigation and comprehension of complex systems.



### **Intuitive BI Dashboards**

Create visual representations of large data sets to unearth patterns, trends and relationships among data, and present your findings in dashboard for sharing. In a dashboard, all charts linked to the same data source are interconnected, allowing any actions performed on the charts to instantly update and reflect your selections.



### **Universal Data Transfer**

Import data into a database from various formats, or through an ODBC connection after setting up a data source connection. Seamlessly export data from tables, collections, views, or query results to popular formats such as Excel, Access, CSV and more.



### **Streamlined Database Documentation**

Create stunning document for each database element. You can choose from a range of pre-designed templates and personalize them to suit your preferences. Set up automated processes to export the document as PDFs, and share them with stakeholders via email.



### **Data Generation Tool**

Provide a comprehensive range of functions to generate a large volume of quality testing data. You can rapidly create realistic data sets with referential integrity based on business rules and constraints.



### **Boost Productivity with Backup & Automation**

Safeguard your data with our reliable local backup and restore solution. Create and schedule batch jobs for your daily tasks, such as like running queries, importing and exporting data, transferring data, and get notification e-mails upon tasks completion.



### **Make Collaboration Easy**

Synchronize your connection settings, queries, snippets, model workspaces, BI workspaces and virtual group information to the cloud service so you can get real-time access to them, and share them with your coworkers anytime and anywhere.



### **Advanced Secure Connection**

Secure your connections with SSH Tunneling and SSL/TLS to guarantee the confidentiality, integrity, and availability of your data. Our advanced PAM authentication method provides multiple layers of protection against unauthorized access.



## Native Design

Navicat is natively designed specifically for a particular platform. We give you a more familiar and optimized experience that feels natural for the system you are running. Navicat delivers more stable and enjoyable experiences for your database management.



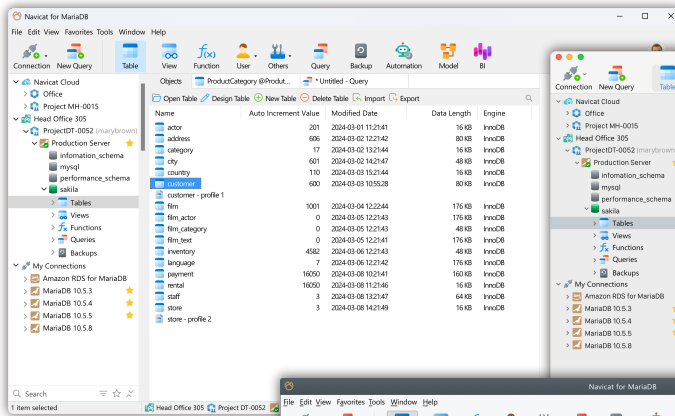
## Dark Mode

Set dark theme to protect your eyes from the traditionally blinding whiteness of computer. No behavior changes with how pages look when you are in dark mode.

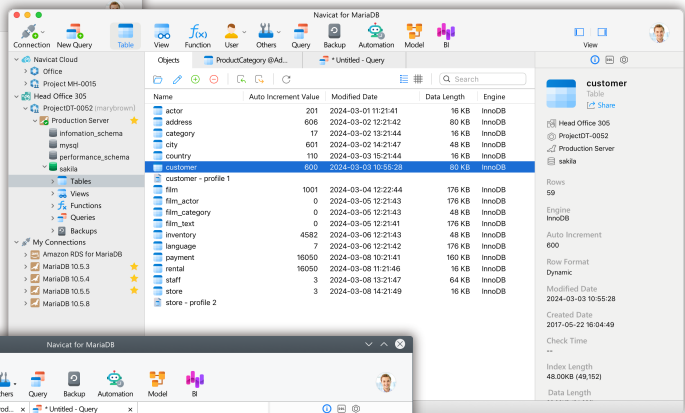


## Cross-Platform Licensing

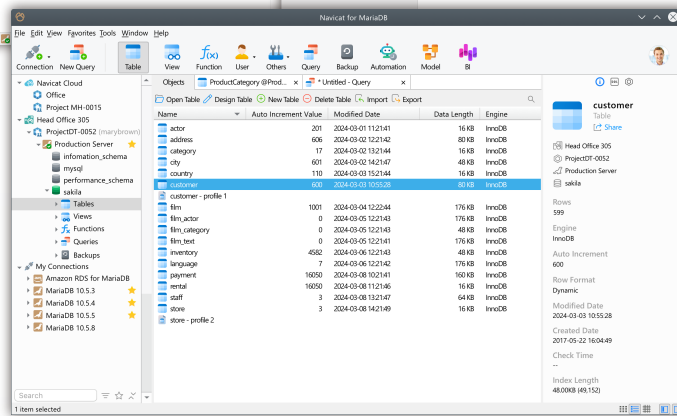
Cross-platform licensing is now available. Whether you're operating on Windows, macOS, or Linux, you can purchase once and select a platform to activate and later on transfer your license.



Windows Version



macOS Version



Linux Version

# FREE TRIAL

We offer a 14-day fully functional free trial of Navicat to download, please visit: <https://www.navicat.com/download/navicat-for-mariadb>

Navicat for MariaDB Overview: <https://www.navicat.com/products/navicat-for-mariadb>



More than  
**50% of the Fortune 500**  
rely on Navicat every day.

Navicat is the choice of over 5 million database users all around the world.  
Over 180,000 registered customers across 7 continents and 138 countries  
have chosen our products.



Google

ORACLE

facebook

amazon

accenture



EY

MOODY'S

J.P.Morgan

KPMG

NETFLIX

AIG

Morgan Stanley

HSBC

Microsoft

salesforce

IBM

AWARDS



PremiumSoft™

PremiumSoft CyberTech Ltd.

PremiumSoft was founded in 1999 and has developed a wide variety of applications for Windows, macOS, Linux and iOS. Our talented team of software engineers is known for producing top-quality software and we maintain a stellar reputation for providing world-class customer support.

**Hong Kong Address :** Unit 1605-1607, Level 16, Tower 1, Grand Century Place,  
Mongkok, Kowloon, Hong Kong

**Singapore Address :** WeWork c/o Navicat Software Pte. Ltd. 9 Battery Road, #10-120,  
Singapore, 049910

**Email:** sales@navicat.com

**Website:** <https://www.navicat.com>